



Philately's Implications in Ecological Education via Romanian Thematic Joint Issues (I): with Other Countries Postal Administrations

Bogdan Cioruța^{1,2*} and Alexandru Leonard Pop¹

¹Technical University of Cluj-Napoca, North University Centre of Baia Mare, 62A Victor Babeș Street, 430083, Baia Mare, Romania.

²Faculty of Applied Sciences, Politehnica University of Bucharest, 313 Splaiul Independenței, 060042, Bucharest, Romania.

Authors' contributions

This work was carried out in between both authors. Author BC designed the study, performed the statistical analysis and wrote the first draft of the manuscript. Author ALP managed the analyses of the study. Both authors read and approved the final manuscript.

Article Information

DOI: 10.9734/AJESS/2020/v7i430208

Editor(s):

- (1) Dr. E. Seda Koc, Namık Kemal University, Turkey.
(2) Dr. Dury (Durdane) Bayram-Jacobs, Eindhoven University of Technology, Netherlands.

Reviewers:

- (1) Mohammed Viquaruddin, Tripura University, India.
(2) Alexandre Schiavetti, Universidade Estadual de Santa Cruz, Brazil.
(3) Junir Antonio Lutinski, Regional Community University of Chapeco, Brazil.
(4) Amos Fang Zeh, University of Buea, Cameroon.
(5) Breno Barra, Federal University of Santa Catarina, Brazil.

Complete Peer review History: <http://www.sdiarticle4.com/review-history/55901>

Received 07 March 2020

Accepted 11 May 2020

Published 23 May 2020

Original Research Article

ABSTRACT

Protected areas, as integral part of natural heritage, by their intrinsic value and low human intervention degree, are by far, the best examples for natural and semi-natural ecological systems. Protected areas are still perceived and considered true wild oasis which need protection for conservation of different unique species that populate them. Little is known about the fact that natural and semi-natural regime areas constitute livelihood support, and decisively contribute to socio-economical development of local and regional communities. Constantly promoting philatelic themes involving the natural heritage, different philatelic postal entities and associations, all over the world, performs a series of postage issues, among which the preoccupations for environmental protection prevail.

*Corresponding author: Email: bciorutza@yahoo.com;

In accordance with the previously stated, in this paper, is proposed an incursion into the history of environmental protection preoccupations, and bring in discussion the significant concerns in promoting ecological educational via thematic joint issues. So is presented the Romanian's collaboration with countries like Argentina, Spain, Estonia and Gibraltar.

This study set out to identify, index and describe the main philatelic pieces issued in Romania, from the beginning of issuing in this field. Likewise, a huge numbers of pictorial data was used (postal stamps, first day covers, occasional envelopes, postcards and maxicards), from different international open-source philatelic databases, as well as from specialized catalogs and collections.

The analysis and interpretation of this kind of pictorial data was the main objective of study, based on the descriptions made by other collectors and philatelists, respectively by consulting other sources and specialized catalogs. As a result, this study has succeeded in identifying the pieces in question, and shows they come to certify the common concerns for the environmental protection, from mountain lakes to species of flora and fauna.

In conclusion it can be mentioned that this study therefore recommends the use of the ecology and science classes, where young people can come into direct contact with the described philatelic pieces (postal stamps and first day covers - FDCs, in most cases), and thus can fully understand the specificities of external collaborations on environmental protection and sustainable development.

Keywords: Natural heritage; Romanian philately; applied ecology; philatelic cooperation.

ABBREVIATIONS

FDC (First day cover)	<i>:Document with a first day cancellation, not necessarily the one with the special illustration.</i>
Joint issues	<i>:Stamps released by two or more countries on the occasion of a common event or anniversary and that are characterized either by a common design or the same date of issue.</i>
Concerted issues	<i>:Identical stamps issued at different dates.</i>
Delayed issues	<i>:Different designs and initial dates, but postal agreement.</i>
Parallel issues	<i>:Different stamp design, but issued at the same date.</i>
Siamese issues	<i>:A special case of twin issues where the stamps of the two issuing countries are printed se-tenant.</i>
Twin issues	<i>:Special cases of joint issues where design and issue date are identical for all the countries involved.</i>

1. INTRODUCTION

Philately is the act of collecting and studying philatelic products, especially stamps and franked envelopes. However, philately signifies more than a concern for beauty. The challenge, information, education and fun, especially worldwide promotion are some of the characteristics of one of the most popular hobbies in the world [1].

By closely scrutinizing the etymology of philately, beyond the franchise business, it is realised that this is more than a preoccupation, a pleasant and instructive means of recreation, which consists in collecting and studying postage stamps and other philatelic-postal items [1]. Practically, the two parts of philately - collecting and studying philatelic parts - are very closely linked, constituting an organic entity.

For over 160 years of philately in Romania, and in the context of twinning environmental philosophy with environment engineering [2,3], the preoccupations for this extremely vast field is to study not only of the stamps of various kinds and types, but also to focus on everything intimate to biodiversity from natural protected areas, animals and plants [4,5].

The promotion of philatelic themes that deal with the natural beauties and richness of our country, the administrative entity responsible for issuing philatelic-postal items, currently Romfilatelia, produces a series of issues in which images of the nature reserves elements are found, especially animals and plants [4,5,6], we consider to be part of natural capital (as shown on Fig. 1, elaborated and adapted by us), in turn, part of the cultural heritage [4,5].

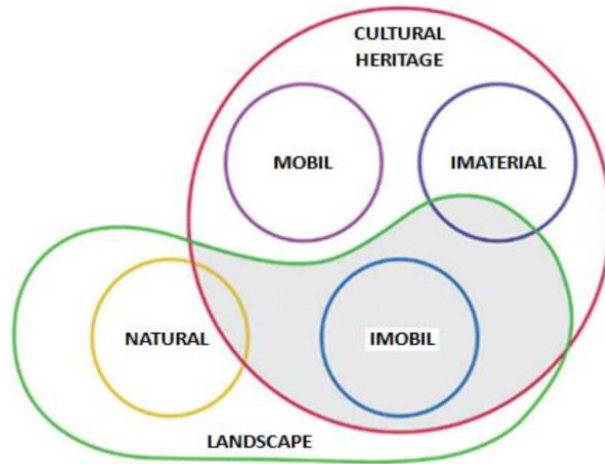


Fig. 1. Natural capital—as part of cultural heritage

Romania is, especially from the point of view of the natural heritage, a place blessed with extremely well-rounded biodiversity of a rare beauty [2-5], we chose to present a series of philatelic issues that come to refine the individual's need for aesthetics and cultural-educational development. The study is conducted in order to present the real history of the thematic philately, especially the one dedicated to nature protection and conservation, in general, and the exploration and exploitation of biodiversity resources, in particular.

In Romania until 30 years ago, philately was a mass-market, accessible to all, and at present it is a niche element of which youth are less and less interested (being corrupted by modern technologies). That is why when a student or teacher appeals to this passion it is appreciated. Because the work refers to the use of philately for education, we also consider that is important to discuss the educational possibilities of using philately, besides the four case studies presenting the use of Romanian elements of biodiversity in partnership with other locations. Thus, the issues analyzed in the presented case studies can easily be used in the form of complementary teaching materials, either as stand-alone philatelic pieces, or in the form of an expository, in the hours of ecology or science in the primary school cycle and gymnasium, to visually the topics addressed in the classroom.

Today, the Romanian philately is in clinical death [7]. Starting from the fact that in most of the time the activity of the teachers is carried out in the classroom and in the instructional-educational process, we considered that it would be good to

point to another side of education, which does not necessarily refer to formal education, that between the cold walls of the classrooms, with the catalog. We also wanted to show that there is a possibility for education to be carried out in a non-formal or informal way [8].

We also wanted to draw the attention of parents and teachers, to make them aware that students' free time could be channeled to more enjoyable activities, to a hobby, such as philately, through which communication skills, aesthetic skills are cultivated and developed. Philately points to interdisciplinary, it is not limited to a certain field of study. In philately we can talk about postage stamps concerning history, geography, science, ecology, etc [8].

For children, philatelic activities mean, first and foremost, the active and attractive use of part of their free time. They contribute to the development of the spirit of observation, of the desire for knowledge, of information from all fields of activity, stimulate attention, realize aesthetic education, develop love and respect for the values that make up the treasure of the universal culture of the world [8]. As such, the philatelic activities constitute an excellent means of instruction and education for young people, because they can acquire new knowledge through their own efforts, completing and consolidating those assimilated to school, in a pleasant, recreational, attractive, interesting and especially selective way.

Due to the specific means used in these activities such as filing cabinets, magnifiers, tweezers, different philatelic pieces, philatelic purses,

atlases, and specialized magazines, the acquisition the new knowledge is achieved through minimal efforts made by the participants [9]. The children practicing these activities in their free time, offers them the opportunity to freely express their initiative, fantasy in the way of combining, assembling the philatelic pieces according to a wide variety of criteria, which means discovery and creativity, which constitute their own ways of asserting their personality [9].

While participating in these activities, children no longer feel uncomfortable in their desire to create something beautiful, interesting, according to their own preferences appropriate to their age, education and knowledge. Gradually, the children understand that the acquisition of new knowledge and the consolidation of the previously acquired ones require from them a more active participation, becoming more and more interested in studying.

2. MATERIALS AND METHODS

The passion for thematic philately, as satisfaction for aesthetic need and as a cultural-educational development, the working methodology consisted in identifying, indexing and describing the main philatelic pieces issued in Romania, which is also the study area, and which in the meantime remain to promote biodiversity from different nature reserves.

In the same context, we start our exposure by defining a joint stamp issue as the release of stamps (or postal stationery issues) by two or more countries, commemorating a common topic, anniversary or person. Joint issues share (or typically have) the same design and release date (first day of issue), and are highly regarded amongst the philatelic community. As mention, their design is often similar or even identical, except for the identification of country and value [10]. Cases where the issue date is the same (identical), but the design different, are referred to as parallel joint issues. On the contrary, when the design is identical, but the lag in issuing the stamps is greater than 3 days the issue is termed a concerted joint issue [10].

Twin issues, on the other hand, are special cases where design and issue date are identical for all the countries involved. Siamese issues, another interesting category, are a special case

of twin issues, where the stamps of the two issuing countries are printed se tenant (joined together side by side when printed) [10,11]. In extreme cases, we have unique issues, for which only a single stamp bearing the names of all the countries involved is printed, a case which is very seldom.

When the event is common, but design and issuing date are different, the issue is termed a common issue. These stamps are usually not reported, because they are out of the scope of the studies and the catalogue (absence of cooperation between postal entities) [10-12]. Sometimes stamps from one country appear to announce a joint issue from another country, but in reality, this second stamp is never released. This would be a unilateral issue [10-12].

For other discussions about definitions, acronyms and abbreviations that we used, see the Definitions, Acronyms and Abbreviations section. Also, in we review the main philatelic issues created in accordance of the protected areas regime [13], as a result of bilateral collaborations, in which Romania was an official partner, starting with 2010 and until now.

During this research period (starting from 2010), philatelic collections and international open-source philatelic databases were thoroughly consulted, including Delcampe (www.delcampe.net), RomaniaStamps (www.romaniastamps.com), Colnect (colnect.com) – as shown in Fig. 2, StampWorld (www.stampworld.com), and PicClick (picclick.com), as well as different dedicated international philatelic catalogs (Yvert, Michael, Gibson, and Scott).

The above mentioned bibliographic resources added, for the fullness of the study, a series of specialized catalogs on philatelic errors, curiosities and varieties as well as an important series of Romanian specialty papers with general character on Romanian postal stamps, which offer valuable information and authenticity to clarify the following parameters: date of issue, layout and indexing, respectively their designer and description [14,15]. At the same time, the open-source philatelic content platforms, especially the forums, have been of great use, where, as a result of the online meetings, valuable information were found.

Bâlea Lake, Romania	
Series:	Mountain Lakes
Catalog codes:	Mi: RO 6463, Sn: RO 5202, Sg: RO 7067, WAD: RO058.10, Rom: RO 1876(2)
Themes:	Joint Issues Landscapes
Issued on:	2010-08-14
Size:	42 x 26 mm
Colors:	Multicolor
Format:	Stamp
Emission:	Commemorative
Perforation:	comb 13¼ x 14
Printing:	Offset lithography
Face value:	3.10 L - Romanian leu
Print run:	23,400



Fig. 2. Colnect - as work method example of philatelic open-source database

3. RESULTS AND DISCUSSION

3.1 Mountain Lakes, Romania-Argentina Joint Issue, 2010

The relationships of the two countries are older, dating back to 1880, continuing with the opening of a Romanian honorary consulate at Buenos Aires. In December 1930, the Romanian-Argentinian diplomatic relations were established at legation level.

Alongside the common thematic of the joint stamps issue [16], that we identified, a recurrent element defining the approach between the two nations consists of the personality of Julius Popper. This great Romanian explorer and cartographer organized expeditions in Argentina, in Land of Fire, and at the southern tip of Patagonia and Great Island. Also, for almost ten years, he gave many Romanian names to the places he discovered, such as Carmen Sylva Peaks, Cordiliera Carlos I of Romania, Mountain

Lahovary, Rio Rosetti, Rio Ureche and the list can continue [16,17].

At the same time, Popper invented a unique equipment for collecting gold from sea water or the gold washing machine, an invention patented in many countries. He issued his own coins, he set up postal offices, he issued a 10 centavos stamp with a capital P from Popper, all these on the Argentinian territory. Julius Popper was also symbolically called the Romanian conquistador of Patagonia by the Argentinian people [16,17].

Marking the 80th anniversary of diplomatic ties, Romfilatelia introduces into circulation, in 14th of August 2010, the Romania-Argentina issue - with the characteristics presented in Table 1 [15,18-20], and with the design presented in Fig. 3 [21-23] and Fig. 4 [24], illustrating the theme Mountain Lakes. To illustrate the joint stamp issue, the two countries have chosen Bâlea Lake (from Romania) - with the face value of 3.10 RON, and Nahuel Huapi Lake (from Argentina) - with the face value of 2.10 RON.

Table 1. Technical characteristics for the mountain lakes stamps

Particulars	Value
Date of issue	14.08.2010
Number of values	2
Stamp / Block / Minisheet size	42 × 26 mm / 96 × 110 mm / 74 × 257 mm
Page composition*	in minisheet of 8 stamps + 8 labels; block of 4 stamps with illustrated border
Printing system	offset, in 4 colours on chromo paper
Run printing	115,800 stamps
Designer	Mihai VĂMĂȘESCU
FDC (first day cover)	400 covers
Listing	LP #1876

*see Fig. 11 from Appendix section, having as reference [25]



Fig. 3. FDC - Mountain Lakes, Romania-Argentina joint issue, 2010

Bălea Lake - 353 m long and 217 m wide - (as shown in the background of Fig. 3) is located at 2,034 m, and situated in the Făgăraș Mountains, belonging to the Southern Carpathians. With a depth of 11 m and a very low temperature, Bălea Lake is protected by a glacial boundary, and is placed in the vicinity of the Transfăgărășan road, the longest Romanian alpine paved road, reaching more than 2,000 m in altitude [16,17].

Nahuel Huapi Lake (as shown in the background of Fig. 4) is situated at 750 m above sea level, and its surface encompasses 557 km². The lake is located within the Nahuel Huapi National Park, positioned at the foothills of the Patagonian Andes. Founded in 1934, it covers approx. 7,050 km², and also it is the oldest National Park in Argentina [16,17].

3.2 Mountain Fauna, Romania-Spain Joint Issue, 2012

In history, over time, Romania and Spain have shared common interesting aspects. The beginning of their diplomatic relations dates back to the 15th century, when Iancu de Hunedoara, at that time the Ruler of Transylvania, and King Alphonso V of Aragon entered into a cooperation treaty [26,27]. As such, Spain recognized Romania's state independence on the 12th of April 1880, and the Romanian-Spanish diplomatic relations were established on the 23rd of June 1881 [26,27].

As a visible landmark of the good relations between the two states in the field of philately, Romfilatelia introduced into circulation the Romania-Spain issue with topic Mountain Fauna, choosing the Carpathian Red Deer and the

Spanish Ibex - with technical characteristics indexed in Table 2 [15,28-31], and presented in Fig. 5 [32,33], Fig. 6 [34-41], respectively Fig. 12 [42] and Fig. 13 [43] from Appendix section.

Upon a first observation, Romfilatelia chose to franchise FDC's issued on October 19, 2012, with both pairs of stamps (both Romanian and Spanish), as opposed to the Spanish postal administration, which used for franking only its own pieces (see Fig. 5 and Fig. 6).

The Carpathian Red Deer (*Cervus elaphus*) lives in Eastern and South-Eastern Europe and is the largest hunting species. Since the natural habitats are more and more scarce, often, unusual behaviour of the animal can be noticed turning the noble stag into a loathed or problem animal. As a result, the national and international laws protect this species [26,27].

The Spanish Ibex (*Capra pyrenaica*) is one of the animal species living in the Iberian Peninsula. It lives in the woods and bushes at medium and high altitudes, 500 to 2,500 m, in areas such as Sierra Nevada, Gredos, Cazorla, Guadarrama, Serania de Cuenca and in certain mountain areas of Catalonia [26,27].

At the end of the 20th century the species started regressing. King Alfonso XIII developed in 1905 the Royal Hunting Refuge in Sierra de Gredos, in order to restrict the hunting. In 1950, reservations started being set up with the aim to mitigating the effects of the extinction danger. Nowadays, this species is provided in Annex III to the Berne Convention [44], and in Annex V to the European Council Directive on the conservation of natural habitats [45].



Fig. 4. FDC - Mountain lakes, Argentina-Romania joint issue, 2010

Table 2. Technical characteristics for the mountain fauna stamps

Particulars	Value
Date of issue	19.10.2012
Number of values	2
Stamp / Block / Minisheet size	33 × 48 mm / 124 × 92 mm / 118 × 162 mm
Page composition	in minisheet of 8 stamps + 1 label and illustrated border; block of 2 stamps
Printing system	offset, in 4 colours on chromo paper
Run printing	144,632 stamps
Designer	Mihai VĂMĂȘESCU & Stan PELTEACU
FDC (first day cover)	900 covers
Listing	LP #1957



Fig. 5. FDC - Mountain Fauna, Romania-Spain joint issue, 2012

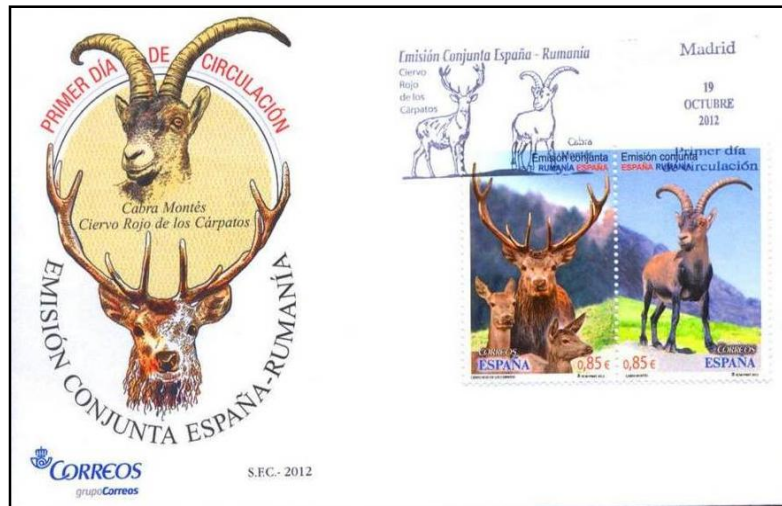


Fig. 6. FDC - Mountain Fauna, Spain-Romania joint issue, 2012

3.3 Forest Species, Romania-Estonia Joint Issue, 2017

Continuing the series of postage stamp issues dedicated to diplomatic relations, Romfilatelia is promoting, in the latest philatelic project, the relations of collaboration with Estonia. As such, Romfilatelia introduced into circulation the Romania-Estonia issue with the topic Forest Species on November 24th [46].

The postage stamp issue having technical characteristics in Table 3 [46-51], has been completed by FDCs - as shown in Fig. 7 [52-54] and Fig. 8 [55-60], and respectively two circulated issue - Fig. 14 [61] and Fig. 15 [61, 62], and four maximum postcards - as shown in Fig. 16 [63], also available on Appendix section. The both stamps, with the same face value, illustrate species of rowan tree and spruce.

Rowan tree (*Sorbus aucuparia*) is a fall-leaf tree that lives at the edge of a wood, in the hill and mountain range, spreading throughout Europe, from the Baltic Estonia to the West of Siberia. It is higher than 10-15 m and has a round crown. Also called birds' Sorbus, they are an important source of food for birds. The longevity of the rowan tree exceeds a century, reaching its maturity at 10 years, having plenty of fruits every year from that age. It is a smoke-resistant tree and can be grown in polluted areas [46].

Spruce (*Picea abies*) is a species of conifer, found in both countries, in Romania being present in the mountain and subalpine region, where it forms pure forests or mixed woods with beech and fir. In Estonia, it occupies the 3rd place as a tree species, after pine and birch trees. Under favorable conditions, spruce can live up to 250 years [47].

Table 3. Technical characteristics for the forest species stamps

Particulars	Value
Date of issue	24.11.2017
Number of values	2 identical
Stamp / Block / Minisheet size	27 × 42 mm / - / 121 × 133 mm
Page composition	in sheet of 32 stamps, and in minisheet of 5 stamps + 1 label and illustrated border offset, in 4 colours on chromo paper
Printing system	
Run printing	24,190 stamps
Designer	Mihai VĂMAȘESCU
FDC (first day cover)	210 covers
Listing	LP #2171



Fig. 7. FDC - Forest Species, Romania-Estonia joint issue, 2017

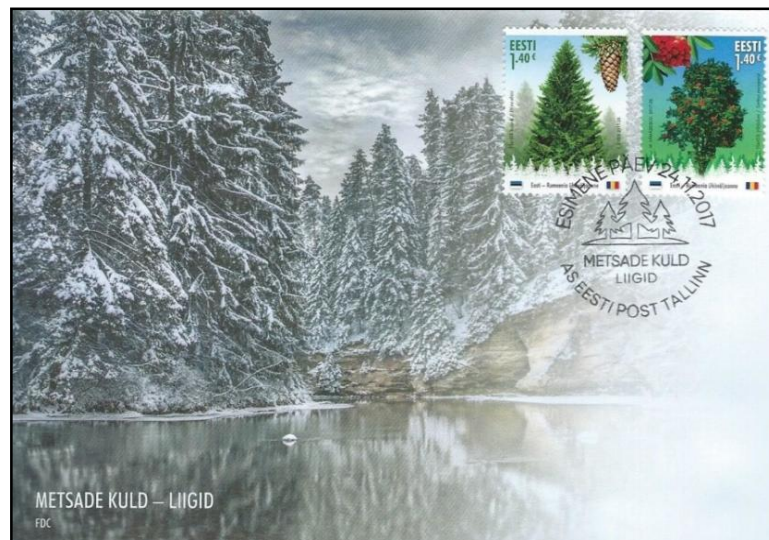


Fig. 8. FDC - Forest Species, Estonia-Romania joint issue, 2017

Table 4. Technical characteristics for the nature reserves stamps

Particulars	Value
Date of issue	12.11.2019
Number of values	2
Stamp / Block / Minisheet size	48 × 33 mm / - / 130 × 160 mm
Page composition	in sheet of 32 stamps, and in minisheet of 5 stamps + 1 label and illustrated border
Printing system	offset lithography, in 4 colours
Run printing	35,214 stamps
Designer	George URSACHI
FDC (first day cover)	475 covers
Listing	LP #2260

3.4 Nature Reserves, Romania-Gibraltar Joint Issue, 2019

Gibraltar has collaborated with Romania on this joint stamp issue with the common topic Nature Reserves. The set of two stamps features an aerial view of Gibraltar's Upper Rock Nature Reserve and a view of Romania's Retezat National Park [64], and have technical characteristics indexed in Table 4 [65-67], completed by FDCs - presented in Fig. 9 [68] and Fig. 10 [69], and three circulated issues, exposed in Fig. 17 [70] and Fig. 18 [71,72], on the Appendix section.

The Retezat National Park is a protected area located in the Retezat Mountains, the western

part of the Southern Carpathians. Occupying a surface of 38,138 hectares, this national park protects one of the last remaining pristine forests in Europe, and it contains more than 20 peaks over 2,000 metres in altitude, as well as 1,000 plant species [64].

Retezat National Park is home to 55 species of mammals, overall 23% of all European terrestrial mammals. This protected area also shelters 120 bird species. Also, more than one-third of Romanian flora species can be found here and 90 of these plants are extremely important for conservation as they are endemic, while 130 are rare or vulnerable [64].



Fig. 9. FDC - Nature Reserves, Romania-Gibraltar joint issue, 2019

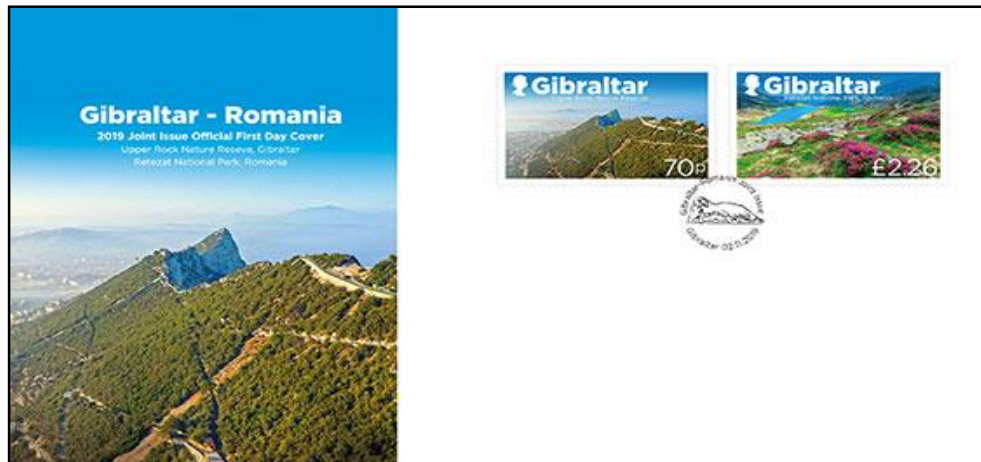


Fig. 10. FDC - Nature Reserves, Gibraltar-Romania joint issue, 2019

The Gibraltar Nature Reserve is a protected nature reserve that covers over 40% of Gibraltar's land area. It was established as the Upper Rock Nature Reserve in 1993 under the International Union for Conservation of Nature (IUCN) [64], and is known for its semi-wild population of Barbary macaques and important resting point for migrating birds. The Rock is part of the Betic Cordillera, formed 200 million years ago. It is an area of considerable beauty and one of the main tourist attractions in Gibraltar [64].

Through the philatelic pieces, in a very large number of pictorial data, we exposed, something that has not been included in Romanian philatelic studies so far. In this way, we hope that we will make available to all those interested a useful tool of information, education and philatelic orientation in what was the environmental protection activity in Romania.

4. CONCLUSION

Lately, in Romania at least, the philatelic research is almost completely missing. The novelty of this study is that we try to bring, to the current and future generations, a hint of the Romanian environmental protection history, in general, and the bilateral collaboration via different initiatives at regional level, in particular.

This study is mainly addressed to passionate philatelists, but can also be of interest to other professional categories, that can develop similar studies starting only from their hobbies. It can be highlighted that philately, especially in the case of this study, is capable of being a true embassy of culture and environmental protection, and not just for the hours of applied science and ecology.

COMPETING INTERESTS

Authors have declared that no competing interests exist.

REFERENCES

1. Pop AL, Cioruța B, Coman M, Considerations regarding the implications of philately in ecological education, Scientific Bulletin of North University Center of Baia Mare, Mining, Mineral Processing, Non-ferrous Metallurgy, Geology & Environmental Engineering. Baia Mare. 2017;31(1):57-62.
2. Mesaroș M, Cioruța B, Coman M, Protected natural heritage on route from philosophy to environment engineering, Scientific Bulletin of North University Center of Baia Mare, Mining, Mineral Processing, Non-ferrous Metallurgy, Geology & Environmental Engineering. Baia Mare. 2018;32(1):63-72.
3. Cioruța B and Pop AL, Philately's Implications in Ecological Education via Romanian Thematic Joint Issues (II): Collaboration with United Nations Post Office. Asian Journal of Environment & Ecology, 2020;12(3):1-14.
4. Cioruța B, Pop AL, Coman M, Luran A, Implications of philately in promoting the protected natural areas (I): Ceahlău National Park, Scientific Bulletin of North University Center of Baia Mare, Mining, Mineral Processing, Non-ferrous Metallurgy, Geology & Environmental Engineering. Baia Mare. 2018;32(1):87-96.
5. Pop AL, Cioruța B, Coman M, Implications of philately in promoting the protected natural areas (II): "Pețea Creek" Natural Reservation, Scientific Bulletin of North University Center of Baia Mare, Mining, Mineral Processing, Non-ferrous Metallurgy, Geology & Environmental Engineering. Baia Mare. 2018;32(2):43-52.
6. Cioruța B, Pop AL, Coman M, Reflections and Implications of Philately in the Promotion of Mining and Mineral Samples, Fossils and Gems in Romania (I): 1945-1960. Journal of Environment and Earth Science International, 2019;21(3):1-20.
7. Available:<https://evz.ro/hobby-uri-de-pe-alte-vremuri-filatelia-agonia-unui-pasiuni-superbe.html>
8. Available:<https://caon.ro/educatie-nonformala-prin-filatelia-la-casa-corpului-didactic/2331879>
9. Available:www.creeaza.com/didactica/didactica-pedagogie/Contributia-activitatilor-filatelize.php
10. Available:www.philarz.net/catalogue/definitions.htm
11. Available:www.philarz.net/catalogue/classification_system.htm
12. Available:www.philarz.net/catalogue/Classificationsystem.pdf
13. Government Emergency Ordinance no. 57/2007 regarding the regime of the protected natural areas, the conservation of natural habitats, and of the flora and fauna- Available:<https://aliantasportnatura.wordpress.com/legea-ariilor-protejate>
14. Scăiceanu C. Catalogul machetatorilor mărcilor poștale românești, Editura Oscar Print, București; 2018.

15. Tudor Gh., Chiricheș C., Mermeze Gh. Catalogul mărcilor poștale românești 1990-2017 (LP #1233-2135), Editura AXA, București; 2017.
16. Available: www.romfilatelie.ro/en/joint-stamp-issue-romania-argentina-mountain-lakes
17. Available: www.romfilatelie.ro/ro/emisiune-comuna-romania-argentina-lacuri-montane
18. Available: colnect.com/en/stamps/list/country/177-Romania/series/66482-Mountain_Lakes/theme/8-Landscapes/year/2010
19. Available: www.stampworld.com/stamps/Romania/Postage-stamps/g6451
20. Available: www.wopa-plus.com/en/stamps/product/&pid=19756
21. Available: www.delcampe.net/en_US/collectibles/stamps/joint-issues/2010-mountains-lakes-joint-issue-of-romania-and-argentina-mixed-fdc-rare-otter-on-cancelation-of-argentina-758618462.html
22. Available: www.delcampe.net/en_US/collectibles/stamps/joint-issues/roumanie-argentine-2010-fdc-mixte-emission-commune-lacs-montagne-romania-joint-issue-argentina-mixed-fdc-lakes-860520028.html
23. Available: www.delcampe.net/en_US/collectibles/stamps/romania/fdc/2010-romania-roumanie-rumania-rumaenien-lakes-joint-issue-with-argentina-lacs-seen-lagos-fdc-cover-premier-jour-128305544.html
24. Available: www.delcampe.net/en_US/collectibles/stamps/joint-issues/argentine-fdc-emission-commune-roumanie-lacs-montagne-argentina-fdc-joint-issue-romania-lakes.html
25. Available: www.delcampe.net/en_US/collectibles/stamps/joint-issues/roumanie-2010-emission-commune-argentine-feuillets-lacs-montagne-romania-joint-issue-argentina-sheetlets-lakes-860517430.html
26. Available: www.romfilatelie.ro/en/mountain-fauna-joint-stamp-issue-romania-spain
27. Available: www.romfilatelie.ro/ro/fauna-montana-emisiune-comuna-romania-spania
28. Available: colnect.com/en/stamps/list/country/177-Romania/series/111954-Joint_Stamp_Issue/theme/3028-Animals_Fauna/year/2012
29. Available: www.stampworld.com/stamps/Romania/Postage-stamps/g6648
30. Available: www.wopa-plus.com/en/stamps/product/&pid=19479
31. Available: www.wopa-plus.com/en/stamps/product/&pid=19482
32. Available: www.delcampe.net/en_US/collectibles/stamps/joint-issues/romania-2012-joint-issue-romania-spain-fdc-412176947.html
33. Available: www.delcampe.net/en_US/collectibles/stamps/game/1433fm-deer-wild-goat-cover-fdc-2012-joint-issue-romania-spain.html
34. Available: www.delcampe.net/en_US/collectibles/stamps/game/6-001-spain-espagne-2012-first-day-cover-joint-issue-spain-romania-red-deer-cervus-elaphus.html
35. Available: picclick.com/Espania-Spain-4753-54-2012-Emission-conjunta-Espania-Rumania.html
36. Available: picclick.com/Spagna-Spain-4753-54-2012-Emissione-giunto-Spagna-Romania-SPD-273565380499.html
37. Available: picclick.com/Spain-II-Centenary-Envelopes-1%C2%BA-Day-2012-edifil-293316029163.html
38. Available: picclick.com/Spain-II-Centenary-Envelopes-1%C2%BA-Day-2012-Edifil-274084201142.html
39. Available: picclick.com/Spain-II-Centenary-Envelopes-1%C2%BA-Day-2012-edifil-274069998784.html
40. Available: picclick.com/Spain-Spain-4753-54-2012-Issue-Joint-Spain-Romania-SPD.html
41. Available: picclick.com/Spanien-Spain-4753-54-2012-Emission-Gelenk-Spanien-Rumanien-SPD-382635944858.html
42. Available: www.delcampe.net/en_US/collectibles/stamps/game/6-spain-espagne-2012-special-postmark-joint-issue-with-romania-red-deer-ciervo-rojo-rothirsch-cerf-elaphe-ed.html
43. Available: www.delcampe.net/en_US/collectibles/stamps/spain-1931-today-2nd-rep-juan-carlos-i/2011-covers/spain-2012-fdc-cover-to-nicaragua-romania-joint-issue-mountain-goat-deer-cancel-bilbao-label-on-back-273717816.html
44. Available: Convention on the Conservation of European Wildlife and Natural Habitats, Appendix III – Protected Fauna Species - <https://rm.coe.int/168097eb57>
45. Available: <https://eur-lex.europa.eu/legal-content/EN/TXT/PDF/?uri=CELEX:01992L0043-20130701&from=EN>
46. Available: www.romfilatelie.ro/en/joint-stamp-issue-romania-estonia-forest-species

47. Available: colnect.com/en/stamps/list/country/177-Romania/series/360685-Forest_species/year/2017
48. Available: www.stampworld.com/stamps/Romania/Postage-stamps/g7296
49. Available: www.wopaplus.com/en/stamps/product/&pid=41267
50. Available: stiinta-pentru-toti.blogspot.com/2017/11/timbrul-romanesc-emisiune-comuna.html
51. Available: www.filateelia.ee/24-11-2017-joint-issue-estonia-romania-forests-gold-forest-species
52. Available: www.delcampe.net/en_US/collectibles/stamps/joint-issues/2017-joint-romania-estonia-official-fdc-romania-2-stamps-relationship-trees-910755253.html
53. Available: www.delcampe.net/en_US/collectibles/stamps/joint-issues/2017-joint-romania-estonia-official-fdc-romania-2-stamps-relationship-trees-909109924.html
54. Available: www.delcampe.net/en_US/collectibles/stamps/joint-issues/romania-2017-joint-issue-romania-estonia-fdc-503517770.html
55. Available: www.delcampe.net/en_US/collectibles/stamps/estonia/forest-joint-issue-estonia-romania-2017-estonia-2stamps-fdc-norway-spruce-picea-abies-rowan-sorbus-aucuparia-mi-905-6-497747921.html
56. Available: www.delcampe.net/en_US/collectibles/stamps/joint-issues/estonia-scott-855-56-fdc-forests-gold-trees-joint-issue-with-romania-2017-948914693.html
57. Available: www.delcampe.net/en_US/collectibles/stamps/plants/trees/forest-joint-issue-estonia-romania-2017-estonia-2stamps-fdc-norway-spruce-picea-abies-rowan-sorbus-aucuparia-mi-905-6-497747825.html
58. Available: www.hipstamp.com/listing/estonia-2017-fdc-forest-trees-norway-spruce-rowan-jis-romania-2v-cover-stamps/17472861
59. Available: picclick.com/Estonia-2017-Joint-Issue-Romania-Forests-Gold-Set.html
60. Available: picclick.com/Estland-Estonia-Postfris-MNH-FDC-Joint-Issue-142624995944.html
61. Available: timbreujura.blogspot.com/2018/01/romania-estonia-joint-stamp-issue.html
62. Available: www.delcampe.net/en_US/collectibles/stamps/joint-issues/estonia-joint-issue-with-romania-cover-circulated-to-romania-registered-shipping-voienregistre.html
63. Available: alexantonache.wordpress.com/2017/12/02/emisiune-comuna-romania-estonia-aurul-padurilor-specii-forestiere
64. Available: www.romfilatelia.ro/en/joint-stamp-issue-romania-gibraltar-natural-reserves
65. Available: colnect.com/en/stamps/list/country/177-Romania/series/370734-Joint_Issue_with_Gibraltar_Nature_Reserves_2019/year/2019
66. Available: www.stampworld.com/stamps/Romania/Postage-stamps/g7602
67. Available: www.wopaplus.com/en/stamps/product/&pid=58258
68. Available: www.delcampe.net/en_US/collectibles/stamps/joint-issues/gibraltar-romania-mixed-fdc-national-parks-joint-issue-of-2019-901686928.html
69. Available: www.gibraltar-stamps.com/index.php?controller=stamps&action=stampdetails&id=1791
70. Available: timbreujura.blogspot.com/2020/02/nature-reserves-joint-stamp-set-with.html
71. Available: www.delcampe.net/en_US/collectibles/stamps/gibraltar/gibraltar-2019-joint-issue-romania-upper-rock-nature-reserve-retezat-national-park-first-day-cover-registered.html
72. Available: covers.postalworld.de/?p=253

APPENDIX



Fig. 11. 2 sheetlet x 8 stamps mint - Mountain Lakes, Romania-Argentina joint issue, 2010

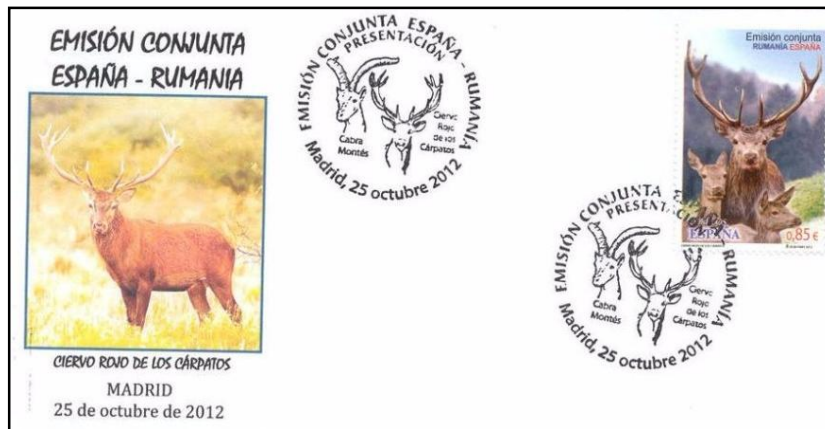


Fig. 12. Envelope with special stamp - Mountain Fauna, Spain-Romania joint issue, 2012



Fig. 13. Circulated issue - Mountain Fauna, SPAIN-ROMANIA joint issue, 2012



Fig. 14. Priority circulated envelope from Romania to France - Forest Species, Romania-Estonia issue, 2017



Fig. 15. Priority circulated envelopes from Estonia to Romania and to France - Forest Species, Estonia-Romania joint issue, 2017



Fig. 16. Maximum cards with first day of issue, Bucharest - Forest Species, Romania-Estonia joint issue, 2017

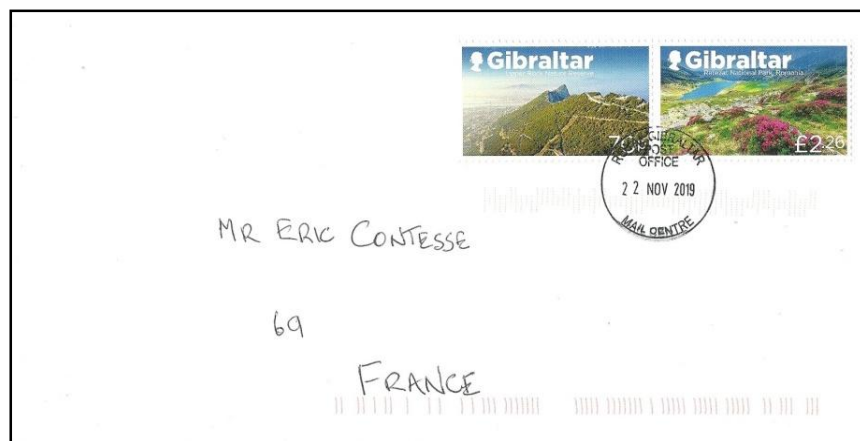


Fig. 17. Circulated issue (to France) - Nature Reserves, Gibraltar-Romania joint issue, 2019



Fig. 18. Circulated FDCs, in recommend mode, from Gibraltar to Spain and to Germany - Nature Reserves, Gibraltar-Romania joint issue, 2019

© 2020 Cioruța and Pop; This is an Open Access article distributed under the terms of the Creative Commons Attribution License (<http://creativecommons.org/licenses/by/4.0>), which permits unrestricted use, distribution, and reproduction in any medium, provided the original work is properly cited.

Peer-review history:
The peer review history for this paper can be accessed here:
<http://www.sdiarticle4.com/review-history/55901>