



Modeling of Soil Exchangeable Sodium Percentage Function to Soil Adsorption Ratio on Sandy Clay Loam Soil, Khartoum- Sudan

**Mohammed M. A. Elbashier^{1,2*}, Shao Xiaohou^{1,3}, Albashir A. S. Ali^{1,4}
and Bashir H. Osman^{1,5}**

¹College Water Conservancy and Hydropower Engineering, Hohai University, Nanjing, 210098, China.

²Department of Soil Conservation, Ministry of Agriculture, Khartoum State, Sudan.

³Key Laboratory of Efficient Irrigation-Drainage and Agricultural Soil-Water Environment in Southern China of Ministry of Education, Hohai University, China.

⁴Department of Soil Science, Agricultural Research Corporation, Khartoum, Sudan.

⁵Faculty of Engineering, University of Sinnar, Sinnar, Sudan.

Authors' contributions

This work was carried out in collaboration between all authors. Author MMAE designed the study and wrote the first draft of the manuscript. Author SX managed the literature searches. Author AASA managed the experimental process. Author BHO checked the manuscript prior to submission. All authors read and approved the final manuscript.

Article Information

DOI: 10.9734/IJPSS/2016/25389

Editor(s):

(1) Dionisios Gasparatos, Soil Science Laboratory, Faculty of Agriculture, Aristotle University of Thessaloniki, Greece.

Reviewers:

(1) Aneeza Soobadar, Mauritius Sugarcane Industry Research Institute, Mauritius.

(2) Fabio Henrique Portella Corrêa de Oliveira, Faculdade de Saude de Paulista, Brazil.

(3) Nurhidayatullaili Muhd Julkapli, Universiti Malaya, Malaysia.

Complete Peer review History: <http://sciencedomain.org/review-history/14202>

Original Research Article

Received 29th February 2016

Accepted 5th April 2016

Published 15th April 2016

ABSTRACT

An experiment was conducted at the Wadi Soba farm, Khartoum- Sudan. The aim of this study is to estimate the Exchangeable Sodium Percentage (ESP) function to Sodium Adsorption Ratio. In this study, linear regression model (ESP-SAR model) for predicting soil ESP from SAR was suggested. For this purpose, 30 soil samples were collected from the field of experiment, soil ESP was estimated from soil SAR in order to compare the predicted results with measured SAR using laboratory tests on saline and non- saline soil samples. The results show that on saline soil

*Corresponding author: E-mail: mohammedltr@yahoo.com;

samples, the Standard Error of Mean (SEM) of predicted ESP obtained by ESP_{SAR} model was (0.9389) and the P-value was (0.0572). On non- saline soil samples, the Standard Error of Mean (SEM) of predicted ESP acquired by ESP_{SAR} model was (0.2920) and the P-value was (0.2628). The statistical results indicated that the linear regression model (ESP_{SAR} model), $ESP = 0.84 \times SAR + 2.17$ with $R^2 = 0.7347$ has a good performance in predicting soil ESP from SAR meanwhile the ESP_{SAR} model reflected more accuracy on non- saline soil samples and it can be recommended for both saline soil and non-saline soil samples.

Keywords: Electrical conductivity; exchangeable sodium percentage; cation exchange capacity; sodium adsorption ratio.

1. INTRODUCTION

Soil chemical, physical and biological properties affect many processes in the soil that make it suitable for agriculture practices and other purposes. Some physical properties such as texture, structure, and porosity influence the movement and retention of water, air and solutes in the soil, which subsequently affect plant growth [1].

Soil salinity and sodicity are important chemical properties and have a negative impact on crops production, particularly in arid and semi-arid areas [2,3,4]. [5] stated that soil salinity refers to the total concentration of soluble salts in the soil and soil sodicity represents the amount of exchangeable sodium relative to other exchangeable cations. Soil salinity and sodicity are recognized by soil Sodium Adsorption Ratio (SAR) and Exchangeable Sodium Percentage (ESP), as defined in Eq. (1) and (2) [6]:

$$SAR = \frac{Na^+}{\sqrt{(Ca^{++}+Mg^{++})/2}} \quad (1)$$

Where:

SAR= Sodium Adsorption Ratio.

Na^+ , Mg^{++} and Ca^{++} = Soluble cations in soil solution (meq/L)

$$(Exchangeable Na^+/CEC) \times 100 \quad (2)$$

Where:

ESP = Exchangeable Sodium Percent, %.

Na^+ = Measured exchangeable Na^+ , meq/100 g.

CEC = Cation Exchange Capacity, meq/100 g.

Accurate and rapid predictions and relatively simple methods are ideally needed for soil

analysis [7,8,9]. The measurement of ESP is often using laborious and time-consuming laboratory tests through determination of Cation Exchange Capacity (CEC) and exchangeable Na^+ , therefore the prediction of ESP from SAR is useful due to their existed relation [10,11]. Furthermore, a number of rapid measurement methods and models on prediction of ESP from SAR have recently been developed by many researchers [12-14] and prediction of other soil properties such as soil organic Carbon, water retention and soil bulk density also have been discussed by many researchers [15-17].

The aim of this study is to estimate the Exchangeable Sodium Percentage (ESP) function to soil Sodium Adsorption Ratio (SAR) by using the ESP_{SAR} Model on saline and non-saline soil samples.

2. MATERIALS AND METHODS

2.1 Soil Sampling

Thirty soil samples (fifteen soil samples represented saline soil samples and fifteen soil samples exemplified non-saline soil) were taken randomly from the field of experiment, Wadi Soba farm (Sharq Elneel) about 50 kilometers from Khartoum- Sudan. All the soil samples were mixed thoroughly and then air-dried. Then, the soil samples were sieved through a 2-mm sieve. The soil Electrical Conductivity (EC), soil pH, texture, calcium, magnesium, calcium carbonate, SAR and ESP were measured using laboratory tests as described by [12]. Some chemical and physical properties of the soil under investigation are shown in Tables 1 and 2. In this paper, a new regression model that obtained from linear regression with $R^2 = 0.7347$ defined as Eq. (3) was used.

$$ESP = 0.84 \times SAR + 2.17 \quad (3)$$

Table 1. The mean, median, minimum, maximum and standard deviation (Sd.) of some chemical and physical properties used to verify the ESP_{SAR} model on saline soil samples

| Parameter | ECe (dS/m) | pH | Sand % | Silt % | Clay % |
|-----------|------------|------|--------|--------|--------|
| Mean | 11.33 | 7.51 | 48.27 | 21.4 | 29.67 |
| Median | 17.5 | 7.6 | 49 | 14 | 35 |
| Min. | 4.6 | 6.8 | 43 | 8 | 22 |
| Max. | 35.3 | 8.1 | 58 | 35 | 50 |
| Sd. | 7.99 | 0.46 | 6.52 | 6.98 | 8.02 |

ECe: Electrical conductivity of soil saturated extract

Table 2. The mean, median, minimum, maximum and standard deviation (Sd.) of some chemical and physical properties used to verify the ESP_{SAR} model on non- saline soil samples

| Statistics | ECe (dS/m) | pH | Sand % | Silt % | Clay % |
|------------|------------|-----|--------|--------|--------|
| Mean | 1.23 | 8.1 | 54.8 | 23.2 | 29.67 |
| Median | 1.5 | 8.1 | 55 | 21 | 34 |
| Min. | 0.17 | 7.7 | 50 | 14 | 20 |
| Max. | 3.65 | 8.6 | 65 | 35 | 46 |
| Sd. | 1.04 | 0.3 | 4.51 | 5.29 | 8.01 |

ECe: Electrical conductivity of soil saturated extract

The results of model were directly compared with the laboratory experimental ones using some statistical measurements.

2.2 Statistical Analysis

A paired samples t-test analyses; the mean difference confidence interval, the standard deviation of difference, standard Error of Mean (SEM) and p-value were used to compare the soil ESP values predicted using ESP_{SAR} model with the soil ESP values measured by laboratory tests.

3. RESULTS AND DISCUSSION

3.1 Results

The soil SAR values used for predicting the soil ESP by ESP_{SAR} model and the measured ESP by laboratory tests on saline and non-saline soil samples are shown in Tables 3 and 4 respectively. Average difference, standard deviation of difference, standard error of mean (SEM), 95% confidence intervals for the difference in means and the p-value of the ESP_{SAR} model on saline soil samples and non-saline soil samples are calculated to evaluate the efficiency of the ESP_{SAR} model compared to the measured laboratory test values as a reference. The results of these statistical analyses using paired samples t-test are shown in Tables 5 and 6 respectively.

3.2 Discussion

3.2.1 On saline soil samples

A paired samples t-test analyses and the mean difference confidence interval approach were used to compare the soil ESP values predicted using the ESP_{SAR} model with the soil ESP values measured by laboratory tests on saline soil samples are shown in Table 5. The mean of soil ESP difference between the ESP_{SAR} model and measured ESP was 1.947. The 95% confidence interval was -0.06834 to 3.963. A p-value for ESP_{SAR} model was 0.0572 and the standard deviation of the soil ESP differences was 3.640. The Standard Error of Mean (SEM) of predicted ESP acquired by ESP_{SAR} model related to the measured ESP was 0.9398. The paired samples t-test results indicated that the soil ESP values predicted by using ESP_{SAR} model were not significantly different with the soil ESP measured by laboratory tests (Table 5). Generally, using of soil SAR to predict ESP showed a high degree of agreement with the findings of [10,12,13]. It clear from Fig. 1 that the ESP_{SAR} model demonstrated a high degree of agreement with the experimentally measured values.

3.2.2 On non-saline soil samples

The mean of soil SAR difference between the ESP_{SAR} model and measured ESP was 0.3407. The 95% confidence interval was -0.2856 to 0.9670 and the p-value was 0.2628. The

standard deviation of the soil SAR differences between ESP_{-SAR} model values and laboratory tests ESP values was 1.131. The Standard Error of Mean (SEM) of predicted ESP was 0.2920. For non-saline soil samples, it clear from Fig. 2 that the ESP_{-SAR} model showed a high degree of agreement with the experimentally measured

values. The results of paired samples t-test showed that the soil ESP values predicted by ESP_{-SAR} model were not significantly different with the soil ESP measured by laboratory tests (Table 6). Generally, using of soil SAR to predict ESP showed a high degree of agreement with the results of [6,13].

Table 3. Chemical properties of soil used for predicting soil ESP by ESP_{-SAR} model on saline soil

| Sample no. | SAR | Laboratory tested ESP | ESP _{-SAR} model |
|------------|-----|-----------------------|---------------------------|
| 1 | 18 | 20 | 17.82 |
| 2 | 36 | 25 | 32.92 |
| 3 | 80 | 62 | 69.9 |
| 4 | 72 | 63 | 63.18 |
| 5 | 32 | 31 | 29.85 |
| 6 | 63 | 50 | 55.62 |
| 7 | 67 | 54 | 59.8 |
| 8 | 24 | 18 | 22.86 |
| 9 | 45 | 45 | 40.5 |
| 10 | 33 | 32 | 30.42 |
| 11 | 16 | 13 | 16.14 |
| 12 | 27 | 23 | 25.38 |
| 13 | 22 | 19 | 21.18 |
| 14 | 21 | 17 | 20.34 |
| 15 | 15 | 14 | 15.3 |

Table 4. Chemical properties of soil used for predicting soil ESP by ESP_{-SAR} model on non-saline soil samples

| Sample no. | SAR | Laboratory tested ESP | ESP _{-SAR} model |
|------------|-----|-----------------------|---------------------------|
| 1 | 1 | 3 | 3.54 |
| 2 | 0.3 | 2 | 2.95 |
| 3 | 1 | 4 | 3.54 |
| 4 | 5 | 7 | 6.9 |
| 5 | 3 | 2 | 5.22 |
| 6 | 2 | 3 | 4.38 |
| 7 | 4 | 5 | 6.06 |
| 8 | 2 | 4 | 4.38 |
| 9 | 6 | 7 | 7.74 |
| 10 | 8 | 11 | 9.42 |
| 11 | 15 | 16 | 16.14 |
| 12 | 6 | 8 | 7.74 |
| 13 | 22 | 19 | 21.18 |
| 14 | 21 | 17 | 20.34 |
| 15 | 15 | 14 | 15.3 |

Table 5. Paired samples t-test analyses on comparing soil ESP determination methods on saline soil samples

| Determination method | Average difference (%) | Standard deviation of difference (%) | Standard error of mean (SEM) | p-value | 95% confidence intervals for the difference in means |
|---|------------------------|--------------------------------------|------------------------------|---------|--|
| ESP _{-SAR} model & laboratory test | 1.947 | 3.640 | 0.9398 | 0.0572 | -0.06834 to 3.963 |

Table 6. Paired samples t-test analyses on comparing soil ESP determination methods on non-saline soil samples

| Determination method | Average difference (%) | Standard deviation of difference (%) | Standard error of mean (SEM) | p-value | 95% confidence intervals for the difference in means |
|--|------------------------|--------------------------------------|------------------------------|---------|--|
| ESP _{SAR} model & laboratory test | 0.3407 | 1.131 | 0.2920 | 0.2628 | -0.2856 to 0.9670 |

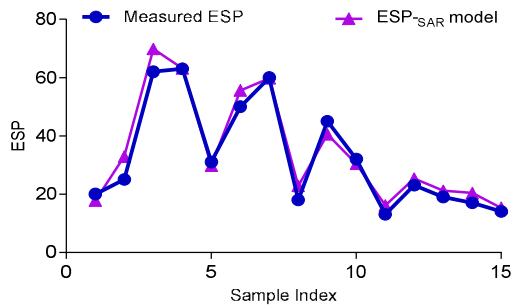


Fig. 1. Measured ESP and predicted ESP using the ESP_{SAR} model on saline soil samples

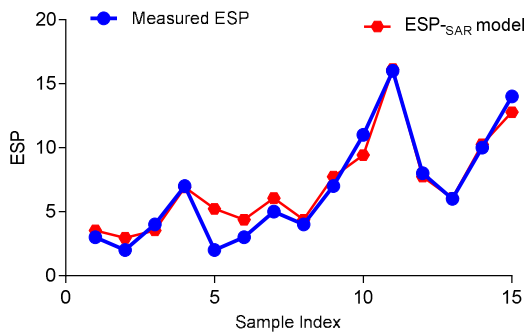


Fig. 2. Measured ESP and predicted ESP using the ESP_{SAR} model on non-saline soil samples

4. CONCLUSION

In this paper, linear regression model (ESP_{SAR} model) was used to predict soil ESP from soil SAR in saline and non-saline soil samples. The statistical results on saline soil samples indicated that there was no difference between the ESP values predicted by the ESP_{SAR} model and the measured values by laboratory tests (P=0.0572, SEM was 0.9398). The paired samples t-test results on non-saline soil samples showed that there was no difference between the ESP values predicted by the ESP_{SAR} model and the

measured values by laboratory tests (P=0.2628, SEM was 0.2920). Generally, the ESP_{SAR} model showed better values on non-saline soil samples. It can be concluded that the ESP_{SAR} model $ESP = 0.84 \times SAR + 2.17$ with $R^2 = 0.7347$ can be recommended for prediction of soil ESP using soil SAR in both saline and non-saline soil samples.

COMPETING INTERESTS

Authors have declared that no competing interests exist.

REFERENCES

1. Catriona MKG. Soil physical constraints to plant growth and crop production. Land and water Development Division Food and Agriculture Organization of the United Nations Rome. 1999;8-20.
2. Malicki MA, Walczak RT. Evaluating soil salinity status from bulk electrical conductivity and permittivity. European Journal of Soil Science. 1999;50:505-514.
3. Ahmad S, Ghafoor A, Qadir M, Aziz MA. Amelioration of a calcareous saline-sodic soil by gypsum application and different crop rotations. International Journal of Agriculture & Biology. 2011;8(2)142-146.
4. Moasheri SA, Foroughifar H. Estimation of the values of soil adsorption ratio using integrated geostatistical and artificial neural network methods. International Journal of Agriculture and Crop Sciences. 2013;(5):2423-2433.
5. Robert F, Ulery A. An introduction to soil salinity and sodium issues in New Mexico. las cruces, circular 656. 2011;1-6.
6. Elbashier MMA, Ebrahim MHA, Musa AA, Ali AAS, Mohammed MAA. Efficiency of two models for prediction of exchangeable sodium percentage from sodium adsorption ratio on saline and non saline soil. Universal Journal of Agricultural Research. 2016;4:32-36.

7. Robbins CW. Sodium adsorption ratio-exchangeable sodium percentage relationships in a high potassium saline-sodic soil. *Irrigation Science*. 1983;(5):173-179.
8. Valente DSM, Queiroz DM, Pinto FAC, Santos N, Santos TL. The relationship between apparent soil electrical conductivity and soil properties. *Artigo Científico*. 2012;(43):683-690.
9. Djuuna IAF, Abbott L, Russell C. Determination and prediction of some soil properties using Partial Least Square (PLS) calibration and Mid-Infra Red (MIR) spectroscopy analysis. *Journal of Tropical Soils*. 2011;(16):93-98.
10. Sudduth KA, Drummond ST, Kitchen NR. Accuracy issues in electromagnetic induction sensing of soil electrical conductivity for precision agriculture. *Computers and Electronics in Agriculture*. 2001;(31):239-264.
11. Musslewhite B, Song J. Salinity and sodicity interactions of weathered mine soils in North Western New Mexico and North Eastern Arizona, topical and final. Report Task 47 Jointly Sponsored Research Project. 2006;7-8.
12. Richards LA. Diagnosis and improvement of saline and alkali soils, determination of the properties of saline and alkali soils United States department of agriculture, Washington, DC. 26, 72; 1954.
13. Seilsepour M, Rashidi M, Khabbaz BG. Prediction of soil exchangeable sodium percentage based on soil sodium adsorption ratio. *American-Eurasian Journal of Agriculture & Environment Science*. 2009;5(1):01-04.
14. Keshavarzi A, Sarmadian F. Mapping of spatial distribution of soil salinity and alkalinity in a semi-arid region. *Annals of Warsaw University of Life Sciences, Land Reclamation*. 2012;(44):3-14.
15. Barancikova, Halas J, Guttekova M, Makovnikova J, Novakova M, Skalsky R, Trarasovicova Z. Application of rothc model to predict soil organic carbon stock on agricultural soils of Slovakia. *Soil and Water Research*. 2010;(1):1-9.
16. Nimmo JR, Herkelrath WN, Luna AML. Physically based estimation of soil water retention from textural data: General framework, new models, and streamlined existing models. *Vadose Zone Journal*. 2007;(6):766-773.
17. Taalab KP, Corstanje R, Creamer R, Whelan MJ. Modeling soil bulk density at the landscape scale and its contributions to C stock uncertainty. *Biogeosciences*. 2013;(10):4691-4704.

© 2016 Elbasher et al.; This is an Open Access article distributed under the terms of the Creative Commons Attribution License (<http://creativecommons.org/licenses/by/4.0>), which permits unrestricted use, distribution, and reproduction in any medium, provided the original work is properly cited.

Peer-review history:

*The peer review history for this paper can be accessed here:
<http://sciencedomain.org/review-history/14202>*